

# ELITE INTERIOR SCREEN WITH HOUSING

Installation Instructions

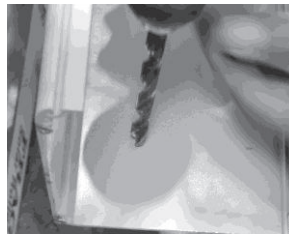
## Prepare Back of Housing



Starting at one at end of housing, make two mounting hole marks 1 1/4" in from end cap on your housing.



Using a 3/8" metal drill bit, drill the two mounting holes.



Repeat this process on other side of housing with other end cap.

**[Note: Top mount holes are on top of the housing, surface mount holes are on back of the housing.]**



**Pictures above demonstrate surface mount holes.]**

### Tools Needed

Drill  
3/8" Metal Drill Bit  
Screwdriver (Flat & Phillips)  
Measuring Tape  
4" Level

### Hardware Provided (per shade)

End Caps (Brackets) (2)  
Housing (1)  
Shade Fabric Tube (1)  
Hand Brace (1)



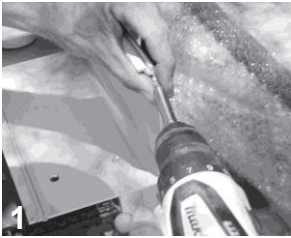
**SUN CONTROL**  
RETRACTABLE SHADES  
*America's Shade Experts*

Toll Free 877-792-1775 | Fax 877-792-0031  
swsuncontrolpro.com | sales@swsuncontrol.com

# ELITE INTERIOR SCREEN WITH HOUSING

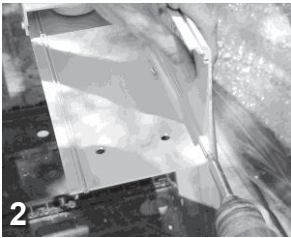
## Installation Instructions

### Prepare Back of Housing *(continued)*



[STEPS 1-3]

Start at one end of housing and remove 3 screws attached to housing and set aside.



Repeat same process on other side of housing.



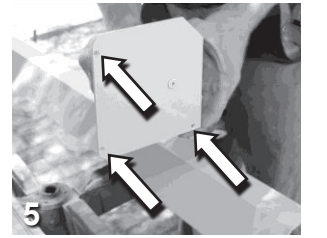
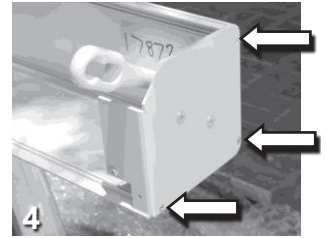
[STEPS 4-6]

Align gear bracket up to screw holes, *(holes you just removed screws from)*

Secure bracket using 3 screws you set aside with Phillips screwdriver.

*(Arrows pointing to holes in bracket).*

Repeat same process on opposite side with idler bracket.



### Hang Back of Housing - 2 Person Job



[STEPS 1-3]

Once you decide where your housing will hang, hold back of housing up to surface and starting on one side, drill starter holes into mounting surface and secure first lag screw and washer on top hole.



Make sure your housing is level. Repeat process on other side of housing.



[STEPS 4-5]

Once housing is secure by itself, bolt your final bottom two lags and washers on each side.

Bolts must be installed in upper corner of box—keep away from the center of the box.

Remove hood screws on both sides of housing located underneath the brackets and set aside.



# ELITE INTERIOR SCREEN WITH HOUSING

## Installation Instructions

### Hang Tube With Fabric - 2 Person Job



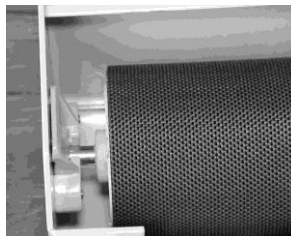
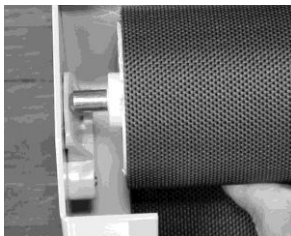
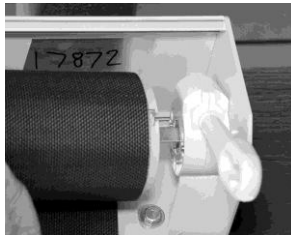
Remove bottom rail from pocket of shade fabric.

Remove bolt from cradle idler and place white bearing on pin end.

Starting on gear end, insert square pin end of shade tube into hole in end cap bracket.

On opposite side, slide round pin end of tube into idler end cap slot.

Replace bolt on cradle idler to lock in place.



Using provided hand brace, lower shade down slightly and put bottom rail back into pocket of fabric.



### Install Front/Bottom Housing

Before securing front housing, first rotate gear to lie vertical

Install the two hood screws you put aside earlier, one on each side.

Set the housing into the groove at the top and bring down to set into place.



Your set up should now be complete and look like this.

# ELITE INTERIOR SCREEN WITH HOUSING

## Installation Instructions

---



### Operate Shade

Slide hook end of hand brace into eyelet of gear on shade.

Rotate hand brace in one direction to raise.



Rotate in opposite direction to lower.

Shade rolls up and down on cable guides.